



Radiofrequency radiation injures trees around mobile phone base stations



Cornelia Waldmann-Selsam^a, Alfonso Balmori-de la Puente^b, Helmut Breunig^c, Alfonso Balmori^{d,*}

^a Karl-May-Str. 48, 96049 Bamberg, Germany

^b C/Navarra, 1 5^oB, 47007 Valladolid, Spain

^c Baumhofstr. 39, 37520 Osterode, Germany

^d Consejería de Medio Ambiente, Junta de Castilla y León, C/Rigoberto Cortejoso, 14 47071 Valladolid, Spain

HIGHLIGHTS

- High frequency nonionizing radiation is becoming increasingly common.
- This study found a high level of damage to trees in the vicinity of phone masts.
- Deployment has been continued without consideration of environmental impact.

GRAPHICAL ABSTRACT

Bernartzky (1986), revisited:



ARTICLE INFO

Article history:

Received 6 June 2016

Received in revised form 19 July 2016

Accepted 6 August 2016

Available online xxxx

Editor: D. Barcelo

Keywords:

Electromagnetic radiation

Effects on trees

Phone masts

Radiofrequencies

ABSTRACT

In the last two decades, the deployment of phone masts around the world has taken place and, for many years, there has been a discussion in the scientific community about the possible environmental impact from mobile phone base stations. Trees have several advantages over animals as experimental subjects and the aim of this study was to verify whether there is a connection between unusual (generally unilateral) tree damage and radiofrequency exposure. To achieve this, a detailed long-term (2006–2015) field monitoring study was performed in the cities of Bamberg and Hallstadt (Germany). During monitoring, observations and photographic recordings of unusual or unexplainable tree damage were taken, alongside the measurement of electromagnetic radiation. In 2015 measurements of RF-EMF (Radiofrequency Electromagnetic Fields) were carried out. A polygon spanning both cities was chosen as the study site, where 144 measurements of the radiofrequency of electromagnetic fields were taken at a height of 1.5 m in streets and parks at different locations. By interpolation of the 144 measurement points, we were able to compile an electromagnetic map of the power flux density in Bamberg and Hallstadt. We selected 60 damaged trees, in addition to 30 randomly selected trees and 30 trees in low radiation areas ($n = 120$) in this polygon. The measurements of all trees revealed significant differences between the damaged side facing a phone mast and the opposite side, as well as differences between the exposed side of damaged trees and all other groups of trees in both sides. Thus, we found that side differences in measured values of power flux density corresponded to side differences in damage. The 30 selected trees in low radiation areas (no visual

* Corresponding author.

E-mail addresses: balmara@jcyL.es, abalmori@ono.com (A. Balmori).

contact to any phone mast and power flux density under $50 \mu\text{W}/\text{m}^2$) showed no damage. Statistical analysis demonstrated that electromagnetic radiation from mobile phone masts is harmful for trees. These results are consistent with the fact that damage afflicted on trees by mobile phone towers usually start on one side, extending to the whole tree over time.

© 2016 Elsevier B.V. All rights reserved.

1. Introduction

For many years, there has been a discussion in the scientific community about whether artificial radiofrequency radiation has harmful effects on living organisms and, more specifically, on the environmental impact from mobile phone base stations (Panagopoulos et al., 2016). Trees have several advantages over animals as experimental subjects: they are continuously exposed to radiation in a constant orientation in the electromagnetic field due to their inability to move (Vian et al., 2016). Additionally, it is possible to easily document changes over time, such as disturbed growth, dying branches, and premature colour change of leaves. Moreover, the damage to trees is objective and cannot be attributed to psychological or psychosomatic factors.

Plants are specialized in the interception of electromagnetic radiation (light) but radiofrequency radiation impact on plants, which is becoming common in the environment because of the exponential use of mobile phone technology, has received little attention and his physiological effect has long been considered negligible.

Since the mid-twentieth century, several researchers have investigated the effects of electromagnetic radiation on plants, both in the laboratory (Kiepenheuer et al., 1949; Brauer, 1950; Harte, 1950, 1972; Jerman et al., 1998; Lerchl et al., 2000; Sandu et al., 2005; Roux et al., 2006, 2008; Sharma et al., 2009; Tkalec et al., 2005, 2009; Beaubois et al., 2007; Kundu and IEEE, 2013; Pesnya and Romanovsky, 2013; Cammaerts and Johansson, 2015; Grémiaux et al., 2016; Vian et al., 2016), and in nature (field observations) (Bernatzky, 1986; Volkrodt, 1987, 1991; Selga and Selga, 1996; Balodis et al., 1996; Haggerty, 2010). Both kinds of study have frequently found pernicious effects.

Around the world, phone masts have been deployed in the last two decades everywhere. Preliminary published studies have indicated deleterious effects of radiofrequency radiation on trees (Balmori, 2004; Van't Wout, 2006; Schorpp, 2011; Waldmann-Selsam, 2007; Waldmann-Selsam and Eger, 2013), cautioning that research on this topic is extremely urgent (Balmori, 2015). However, these early warnings have had no success and deployment has been continued without consideration of environmental impact.

In a review of the effects of environmental microwaves on plants (Jayasanka and Asaeda, 2013), it was indicated that effects depend on the plant family and the growth stage, as well as the exposure duration, frequency, and power density. This review concluded that most studies that address the effects of microwaves on animals and plants have documented effects and responses at exposures below limits specified in the electromagnetic radiation exposure guidelines and it is therefore necessary to rethink these guidelines (Jayasanka and Asaeda, 2013).

Since 2005, on the occasion of medical examinations of sick residents living near mobile phone base stations, changes in nearby trees (crown, leaves, trunk, branches, growth...) were observed at the same time as clinical symptoms in humans occurred. Since 2006 tree damages in the radiation field of mobile phone base stations were documented (<http://kompetenzinitiative.net/KIT/KIT/baeume-in-bamberg/>). In the radio shadow of buildings or that one of other trees, the trees stayed healthy.

Additionally, unilateral crown damage, beginning on the side facing an antenna, pointed to a possible link between RF-EMF (Radiofrequency Electromagnetic Fields) and tree damage. We carried out measurements on both sides of unilaterally damaged trees. Most of the trees had been exposed to RF-EMF for at least five years. Each time we

found considerable differences between the measured values on the damaged and on the healthy side.

The aim of the present study was to verify whether there is a connection between unusual (generally unilateral) tree damage and radiofrequency exposure.

2. Materials and methods

The official information of 65 mobile phone sites in the neighbouring cities Bamberg and Hallstadt was extracted from the EMF database (EMF-Datenbank) of the German Federal Network Agency (Bundesnetzagentur, in March 2011 and October 2015). Each site certificate ("Standortbescheinigung") provides information on the mounting height of antennas, the number and main beam direction of the sector antennas, the number of omnidirectional antennas (ND), the number of other transmitters, as well as the horizontal and vertical safety distances. The current specifications of the transmission facilities are available at: <http://emf3.bundesnetzagentur.de/karte/Default.aspx>

On most of the 65 mobile phone sites several sector antennas emitting RF-EMF with differences in frequency, modulation and other physical characteristics are installed (GSM 900, GSM 1800, UMTS, LTE (4th generation), TETRA). In 2011 there was a total of 483 sector antennas, in 2015 a total of 779 sector antennas.

Numerical code, address and UTM 32N coordinates for the 65 Mobile phone (base stations) sites in Bamberg and Hallstadt are shown in Table 1.

Between 2006 and 2015 there was observation and documentation of tree damages. There were some preliminary measurements on both sides of unilaterally damaged trees and approximately 700 trees in Bamberg and Hallstadt were visited. The condition of numerous trees has been documented in photographs. The photographs record the state of trees showing damage patterns not attributable to diseases, pests, drought or other environmental factors in order to monitor damage and growth over several years (in 2006, Olympus FE-100 was used; since 2007, Panasonic DMC-FZ50 was used).

In 2015 we selected a polygonal study site, with an approximate area of 30 km^2 , which includes partial municipalities of Bamberg and Hallstadt (70 km^2). The study area with the location of the phone masts in the layer of natural areas and municipalities is shown in Fig. 1. In this area, different measurements (see below) were done both for having a radiation map and for knowing which are the incident power densities beside different trees. In spite of the fact that measurements are changing continuously, they do not show significant differences between times (own data, see below).

In this polygon, we performed 144 measurements of the radiofrequency electromagnetic fields at a height of 1.5 m at different points in the city. These measurements were taken in streets and parks and allowed the preparation of an electromagnetic map of Bamberg and Hallstadt with their interpolation. The measurements were carried out with an EMF-broadband analyzer HF 59B (27–3300 MHz) and the horizontal-isotrope broadband antenna UBB27_G3, (Gigahertz Solutions). Measurements of the sum peak values of power flux density were in $\mu\text{W}/\text{m}^2$, which can be converted in V/m.

In general, a sector antenna covers an angle of 120° and the radiation of the sector antennas is distributed in main and secondary beams, bundled vertically and horizontally. The high-frequency emissions are reflected/diffracted and/or absorbed by buildings and trees. Therefore,

Table 1
Official information of the 65 mobile phone base stations in Bamberg and Hallstadt.

Code number	Adress in Bamberg and Hallstadt	X	Y	Code number	Adress in Bamberg and Hallstadt	X	Y
1	Altenburg	634268	5527019	34	Ludwigstr. 25 (Post)	636318	5529177
2	Am Borstig 2	636070	5531636	35	Luitpoldstr. 51	636241	5529232
3	Am Hirschknock	637511	5532267	36	Mainstraße, Ladekai 2	633924	5530319
4	An der Breitenau 2	637253	5530650	37	Mainstraße, Ladekai 3	633816	5530130
5	(An der Breitenau, P&R) ca.	637259	5526912	38	Margaretendamm 28	635341	5529331
6	(Artur-Landgraf-Straße)	635183	5526912	39	Memmelsdorfer Straße (Post) ca.	637769	5531392
7	Breitäckerstr. 9	632965	5529621	40	Memmelsdorfer Str. 208a	637568	5531191
8	Coburger Str. 6a	635877	5529951	41	Memmelsdorfer Str. 208a	634861	5528541
9	Coburger Str. 35	635252	5530468	42	Mußstr. 1	634949	5528827
10	Erllichstr. 47/51	637291	5527903	43	Pödeldorfer Str. 144	637828	5529305
11	Franz-Ludwig-Str. 7	635843	5528490	44	Rheinstr. 16 ca.	632910	5530367
12	Geisfelder Str. 30	637689	5528020	45	Robert-Bosch-Str. 40	637767	5528292
13	Grüner Markt 1	635624	5528370	46	Schildstr. 81	637049	5529049
14	Grüner Markt 23	635640	5528565	47	Schranne 3	635511	5528166
15	Gutenbergsstr. 20	638448	5527180	48	Schützenstr. 23	636197	5527961
16	Hainstr. 4	635945	5528229	49	Schwarzenbergstr. 50	636762	5528732
17	Hainstr. 39	636341	5527550	50	Siemensstr. 37–43	638091	5528505
18	Hauptsmoorstr. 26a	638223	5530558	51	Theresienstr. 32	637487	5527866
19	Hauptsmoorwald, Pödeldorfer Straße	639683	5529635	52	Unterer Kaulberg 4	635350	5528084
20	Hauptsmoorwald, Geisfelder Straße	639890	5528022	53	Von-Ketteler-Str. 2	637905	5527553
21	Heiliggrabstr. 15	636054	5529240	54	Wilhelmsplatz 3	636316	5528259
22	Heinrichsdamm 1	635849	5528723	55	Zollnerstr. 181	637772	5530133
23	Heinrichsdamm 33a, P&R	636748	5527529	56	Heganger 18	634327	5530982
24	Hohenlohestr. 7	634794	5526480	57	Biegenhofstr. 13	633963	5531045
25	Kantstr. 33	637161	5530333	58	Seebachstr. 1	634399	5531764
26	Katzenberg	635374	5528266	59	Landsknechtstr.	634800	5531918
27	Kirschäckerstr. 37	636649	5530756	60	Lichtenfelser Str.	634864	5532621
28	(Kloster-Langheim-Str. 8)	637190	5529182	61	Michelinstr. 130 ca.	635629	5532106
29	Kronacher Str. 50	636722	5531496	62	Margaretendamm	634991	5529497
30	Lagerhausstr. 4–6	634850	5529871	63	Mainstr. 36a/Kiliansplatz	634326	5532386
31	Lagerhausstr. 19	634304	5530136	64	Bamberger Straße	635964	5526050
32	(Laurenziplatz 20)	635207	5527404	65	Würzburger Str. 76	635359	5526709
33	Ludwigstr. 2	635207	5529103				

due to existing obstacles there is an inhomogeneous radiofrequency field distribution. Buildings and vegetation (trees and foliage) can shield and reduce radiation and thus affect the quality of signal propagation (e.g. Meng and Lee, 2010). Living material is not a perfect dielectric object and interferes with high frequency electromagnetic fields in a way that depends upon several parameters, including the general shape,

conductivity, and density of the tissue, and the frequency and amplitude of the electromagnetic radiation (Vian et al., 2016).

In the polygon mentioned before we selected 60 trees showing unilateral damage. The selection was limited by the fact that we were able to measure with the telescopic rod only up to a height of 6 m. Many trees (*Tilia*, *Betula*, *Quercus*, *Populus*, *Picea*) showing damage above the

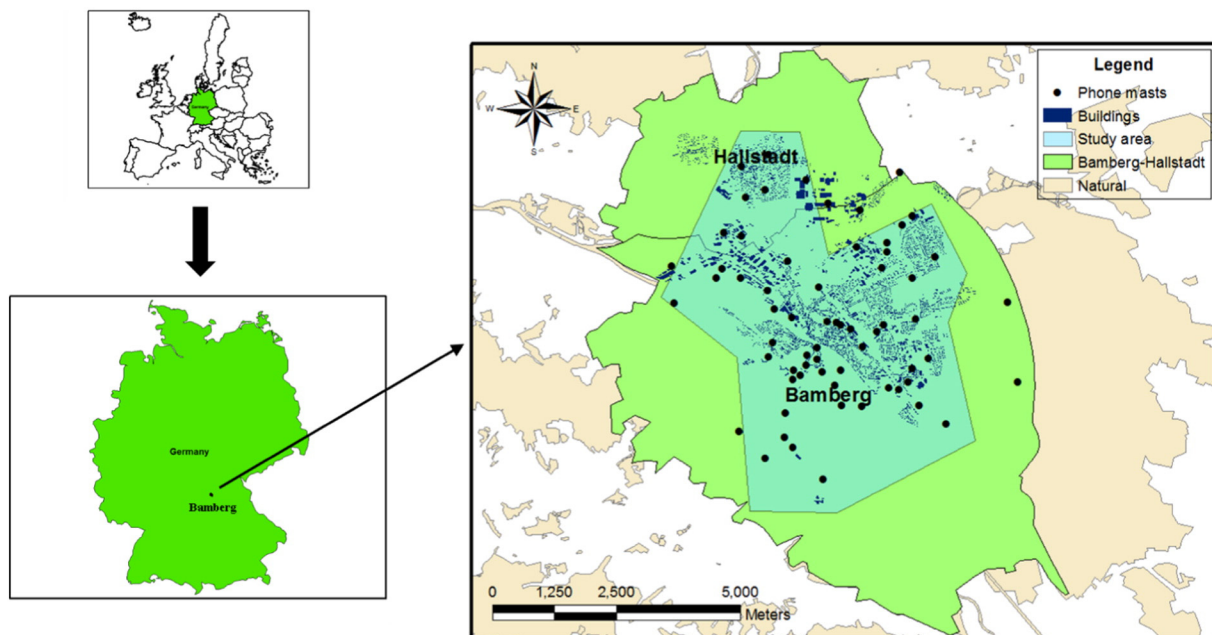


Fig. 1. The study area with the location of the phone masts in the layer of natural areas, buildings, and municipalities.

height of 6 m could not be included. The measurements at the trees were done between April and October 2015. *Acer platanoides*, *Carpinus betulus*, *Tilia* sp., *Taxus baccata* and *Thuja occidentalis* are widely spread in Bamberg and Hallstadt and can be reached for measurements. Therefore they are the most represented species.

The selected 60 trees from the study polygon show damage patterns that are not usually attributable to harmful organisms, such as diseases (fungi, bacteria, viruses) and pests (insects, nematodes) or other environmental factors (water stress, heat, drought, frost, sun, compaction of the soil, air and soil pollutants).

The main features of damage from this source are:

- Trees are mainly affected on one side (showing side differences and unilateral damage) and can appear in any orientation. The damage only originates on one side.
- Damage appears without external indications that the tree is infested with insects, nematodes, fungi, bacteria or viruses.

- Damage appears on trees, which have previously grown well. Damage appears on once healthy trees within one or two years after Antennas were put into operation.
- Damage increases from the outside to the inner part of the crown over time.
- Trees of different species in the same location also show damage.
- Damage appears in favourable (gardens, parks) as well as in unfavourable locations.
- Trees in the same location, but that are shielded by buildings or other trees, are healthy.

For these damaged trees, we used 13 damage codes that may be recognised with the naked eye (for explanations, see Table 2). In order to explain each type of damage visually, a photograph was added for each damage code.

Table 2

Tree damage codes.


-
- | | |
|--|--|
| 01 Damage only on one side: The tree shows damage only on one side. The damage can be recognized with the naked eye. |  |
| 02 Crown transparency (sparse leaves or needles): The number of leaves or needles is reduced. The crown transparency increases from year to year. | |
| 03 Brown leaves (start at leaf margins): The leaves begin to turn brown in June. The browning starts at the leaf margins. It looks similar to effects by salt. | |
| 04 Colour change of leaves prematurely: Leaves become yellow, red or brown (in the whole) early in the year. | |
| 05 Tree leaves fall prematurely: The leaves begin to fall already from June on. | |
| 06 Dead branches: Over a period of some years it can be observed how little and big branches die. | |
| 07 Tip of the main guide dried. | |
| 08 Irregular growth. The growth of deciduous and coniferous trees can be disturbed in different manners. One observation is that trees bend to a side. | |
| 09 Not grow in height: Trees often stop to grow in height. The height was not measured. Only the visual impression was valued. | |
| 10 Colour change of needles. Needles can change their colour to yellow, red or brown. | |
| 11 Dead parts were trimmed down: When bigger branches die, it becomes necessary to remove these parts for the sake of security of people passing. | |
| 12 Damage on different sides: The trees show damages on different sides. | |
| 13 No damage: The tree shows the typical habitus of its species. With the naked eye no damage can be seen. | |
-

Table 3
144 selected points in Bamberg and Hallstadt with their measurements and UTM coordinates.

Number	Streets and parks in Bamberg and Hallstadt	Measurement $\mu\text{W}/\text{m}^2$	X	Y	Number	Streets and parks in Bamberg and Hallstadt	Measurement $\mu\text{W}/\text{m}^2$	X	Y
1	Wassermannpark	2300	637395	5530345	73	Ludwigstraße/Zollnerstraße	50	636228	5529444
2	Memmeldorfer Str. 209	1830	637581	5531113	74	Landratsamt, Ludwigstraße, Einfahrt	670	636422	5529044
3	Holunderweg	10	638125	5530967	75	Wilhelmsplatz, Mitte	460	636250	5528263
4	Hauptsmoorstraße/Seehofstraße	3600	638039	5530857	76	Amalienstr. 16	16570	636303	5528086
5	Greiffenbergstr. 79	4210	638349	5530855	77	Otttostr. 7a	120	636133	5527878
6	Heimfriedweg 16	870	638393	5530621	78	Schönbornstr. 3	3640	636251	5527696
7	AWO, Innenhof, Parkplatz	3920	638223	5530584	79	Hainspielplatz	1530	636229	5527403
8	Ferdinand-Tietz-Str. 40	2600	637883	5530616	80	P&R Heinrichsdamm, Parkplatz bei Kirschen	3400	636706	5527667
9	Ferdinand-Tietz-Str. 38	80	637889	5530601	81	P&R Heinrichsdamm, südöstlich des Senders, Eichen	1690	636755	5527504
10	Petrinistr. 20	1340	637797	5530514	82	Luisenhain, Höhe Wasserwerk	260	636895	5526482
11	Petrinistr. 32	4700	637891	5530449	83	Kapellenstraße	2120	637050	5528148
12	Zollnerstraße 181	9300	637773	5530102	84	Geisfelder Str. 9, Gärtnerei	740	637410	5528164
13	Wassermannstr. 14	540	637424	5530125	85	Geruthstr. 8	30	637621	5527424
14	Feldkirchenstraße/Kantstraße	2620	636803	5530069	86	Distelweg, Innenhof	15	637881	5527160
15	Breslaustr. 20	3890	637392	5530431	87	Am Sendelbach BSC 1920	30	637331	5526877
16	Berliner Ring	16920	637188	5530786	88	Am Sendelbach, Kleingartenanlage	10	637542	5526222
17	Rodezstr. 3	3780	637044	5530765	89	Robert-Bosch-Straße	2060	637504	5528200
18	Am Spinnseyer 3	880	637545	5530764	90	Ludwigstraße/Memmeldorfer Straße	1000	635974	5529708
19	Kirschäckerstr. 24	4290	636655	5530857	91	Coburger Straße, Neubau Studentenwohnheim	3460	635867	5529878
20	Kammermeisterweg	810	636283	5530282	92	Coburger Straße, junge Platane	3400	635835	5529941
21	Eichendorff-Gymnasium, Hof	6340	637194	5529084	93	Gundelsheimer Str. 2	9000	635783	5529680
22	Starkenfeldstraße/Pfarrfeldstraße	3660	637092	5529138	94	Hallstadter Straße	1213	635232	5530212
23	Parkplatz auf der Westseite der Polizei	9020	636921	5528970	95	Gerberstraße/Benzstraße	1280	635108	5530546
24	Starkenfeldstraße, Höhe Polizei	1120	636975	5529061	96	Coburger Straße, Einfahrt Fitnesszentrum	2000	635326	5530508
25	Starkenfeldstr. 2	860	637527	5529216	97	Kleintierzuchtanlage	890	635380	5530622
26	Pödeldorfer Str., Haltestelle	2180	636965	5529217	98	Margaretendamm, Eingang ehemaliges Hallenbad	1300	635455	5529178
27	Kindergarten St. Heinrich, Eingang	6450	637712	5529364	99	Margaretendamm/Europabrücke	1890	635200	5529365
28	Pödeldorfer Straße, Haltestelle Wörthstraße	1620	637654	5529433	100	Margaretendamm 38, nahe Sendeanlage	5560	635003	5529497
29	Pödeldorfer Str. 142, Nordseite	30	637840	5529437	101	Hafenstraße/Regnitzstraße	7610	634719	5529740
30	Pödeldorfer Str. 142, Südseite	17060	637824	5529410	102	Lagerhausstraße	210	634556	5530102
31	Berliner Ring, Höhe Pödeldorfer Str. 144	4480	637900	5529380	103	Hafenstr. 28, Bayerischer Hafen	3200	634192	5530370
32	Schwimmbad Bambados, Vorgarten mit Bambus	1620	638074	5529315	104	Laubanger 29	160	634202	5530561
33	Schwimmbad Bambados, Parkplatz, Feldahorn	2540	638202	5529346	105	Heganger	1400	634341	5530812
34	Carl-Meinelt-Str.	5360	638043	5529094	106	Emil-Kemmer-Str. 2	5000	633822	5530863
35	Volkspark, FC Eintracht, Ostseite	120	638343	5529065	107	Emil-Kemmer-Str. 14	2500	634342	5531099
36	Michelsberger Garten, Teil Streuobst	5450	634831	5528673	108	Dr. Robert-Pfleger-Straße 60	90	634448	5530978
37	Michelsberger Garten, Terrassengarten, bei Eibe	2500	634988	5528508	109	Friedhof Gaustadt, Haupteingang	13100	632981	5529677
38	Michelsberger Garten, Südostecke, bei Holunder	910	635036	5528455	110	Friedhof Gaustadt, Ahornpaar	1400	632929	5529728
39	Michelsberg, Aussichtsterrasse, oberhalb Weinberg	1260	634924	5528463	111	Herzog-Max-Str. 21	1600	636245	5528071
40	Michelsberg, Aussichtsterrasse, Aussichtspunkt	780	634911	5528537	112	Gaustadter Hauptstr. 116	10	634042	5529457
41	Michelsberg, Nordostecke, bei jungen Linden	390	634874	5528565	113	Landesgartenschauelände, Hafenerlebnispfad	2000	633789	5529894
42	Storchsgasse/Michelsberg	200	634725	5528415	114	Landesgartenschau, junge Baumgruppe	1270	633949	5529718
43	St. Getreu-Kirche, Südseite	55	634518	5528405	115	Würzburger Str.	340	635283	5527151
44	Villa Remeis, Garten	390	634295	5528203	116	Würzburger Straße/Arthur-Landgraf-Straße	1380	635355	5526862
45	Villa Remeis, Treppe	300	634400	5528237	117	Hohe-Kreuz-Straße/Würzburger Straße, Haltestelle	590	635383	5526733
46	Maienbrunnen 2	3920	634744	5528838	118	Hohe-Kreuz-Straße	10950	635469	5526729
47	Am Leinritt	2140	635071	5528617	119	Am Hahnenweg 6	3420	635332	5526729
48	Abtsberg 27	130	634526	5528935	120	Am Hahnenweg/Viktor-von-Scheffel-Straße	640	635307	5526710
49	Welcome Hotel, Garten	3200	634788	5529012	121	Am Hahnenweg 28 a	145	635028	5526654
50	Mußstraße, eingang Kindergarten	1670	634864	5529011	122	Schlüsselberger Straße	200	634712	5526534
51	Mußstraße/Schlüsselstraße	710	634846	5529034	123	Schlüsselberger Str./Haltestelle Hezilostr., Parkdeck	460	634749	5526549
52	Nebingerhof	2040	635069	5528901	124	Hezilostr. 13	70	634604	5526563
53	Graf-Stauffenberg-Platz	100	635120	5529009	125	Stückleinsweg, junge Hainbuchenhecke	75	634512	5526654
54	Don-Bosdo-Straße, Innenhof	10	635176	5529056	126	Rößleinsweg, oberes Ende	300	634708	5526789
55	Pfeufferstraße/Weide	1100	635222	5528820	127	Große Wiese	1500	634874	5526810

Table 3 (continued)

Number	Streets and parks in Bamberg and Hallstadt	Measurement $\mu\text{W}/\text{m}^2$	X	Y	Number	Streets and parks in Bamberg and Hallstadt	Measurement $\mu\text{W}/\text{m}^2$	X	Y
56	Weidendamm/Don-Bosco-Straße	1860	635166	5529195	128	Suidgerstraße	195	634508	5526409
57	Katzenberg/Karolinenstraße	1720	635316	5528239	129	Waizendorfer Straße	280	635317	5525864
58	Vorderer Bach	450	635305	5528141	130	Waizendorfer Straße, Einfahrt Gärtnerei	210	635326	5525582
59	Obere Brücke	8000	635565	5528289	131	Klinikum, Nähe Spielplatz	175	635732	5525672
60	Judenstraße	6	635479	5528040	132	Klinikum Weiher	100	635759	5525520
61	Tourist Information	4920	635674	5528172	133	Buger Straße/Bamberger Straße	2730	635829	5526082
62	Universität, Am Kranen 14, Innenhof	10	635501	5528535	134	Dunantstraße	470	635848	5526176
63	Fleischstraße	10	635703	5528683	135	Buger Straße/Paradiesweg	90	635743	5526286
64	ZOB	600	635882	5528541	136	Buger Straße/Abzweigung Münchner Ring	470	635528	5526499
65	Schönleinsplatz, Ostseite	900	636004	5528300	137	Hallstadt, Markplatz, bei Linde	2000	634582	5532426
66	Friedrichstraße, Parkplatz	165	635984	5528360	138	Hallstadt, Markplatz 21, Innenhof	8	634632	5532488
67	Franz-Ludwig-Straße/Luisenstraße	1720	636158	5528410	139	Hallstadt, Lichtenfelser Str. 12	4000	634659	5532474
68	Franz-Ludwig-Str, Strassenbauamt	90	636246	5528408	140	Hallstadt, Lichtenfelser Str. 8	9000	634720	5532516
69	Heiliggrabstraße, Nähe Sender	4740	636072	5529245	141	Hallstadt, Am Gründleinsbach/Kemmerner Weg	200	634743	5532784
70	Heiliggrabstr. 29, Landesjustizkasse	20	636063	5529399	142	Hallstadt, Valentinstraße/Seebachstraße	2200	634232	5532237
71	Heiliggrabstr. 57, Aussichtspunkt Schiefer Turm	4500	635797	5529410	143	Hallstadt, Johannisstr. 6	5000	634805	5532078
72	Bahnhof, ParkplatzWestseite	1600	636300	5529374	144	Hallstadt, Bamberger Straße/Michael-Bienlein-Straße	1860	634805	5531969

For each selected tree, the types of damage and the Universal Transversal Mercator (UTM) coordinates were recorded. In addition, two measurements were recorded: on the side showing damage and on the side without damage, generally corresponding to opposite sides of each tree. On both sides, the measurements were carried out at a variable height of 1–6 m (depending on the height of the tree), using a telescopic rod, a ladder, and the broadband radiofrequency meter.

Most measurements were done in the afternoon or in the evening on different days between April and October 2015. But the measurements on the two sides of each single tree were done one after another immediately on the same day and at the same time. The measurements took about 5 min on each side. When we stood on the ground or on a ladder

we measured the peak values. When we used the telescopic rod we measured the peak hold values. Using the telescopic rod and measuring peak hold values it took longer, because the measurements had to be repeated often in cases where RF-EMF emitting cars or passengers disturbed the results. At each single tree the two measurements were done in the height where the damage had appeared. Because the height of the 120 trees differed, it was necessary to do the measurements at different heights.

In theory, although measurements are changing continuously there is no evidence about significant changes in power densities of electromagnetic radiation produced by phone masts over time. One study carried over one year in the city of Madrid showed no changes in terms of radiation intensity between the three rounds of measurements

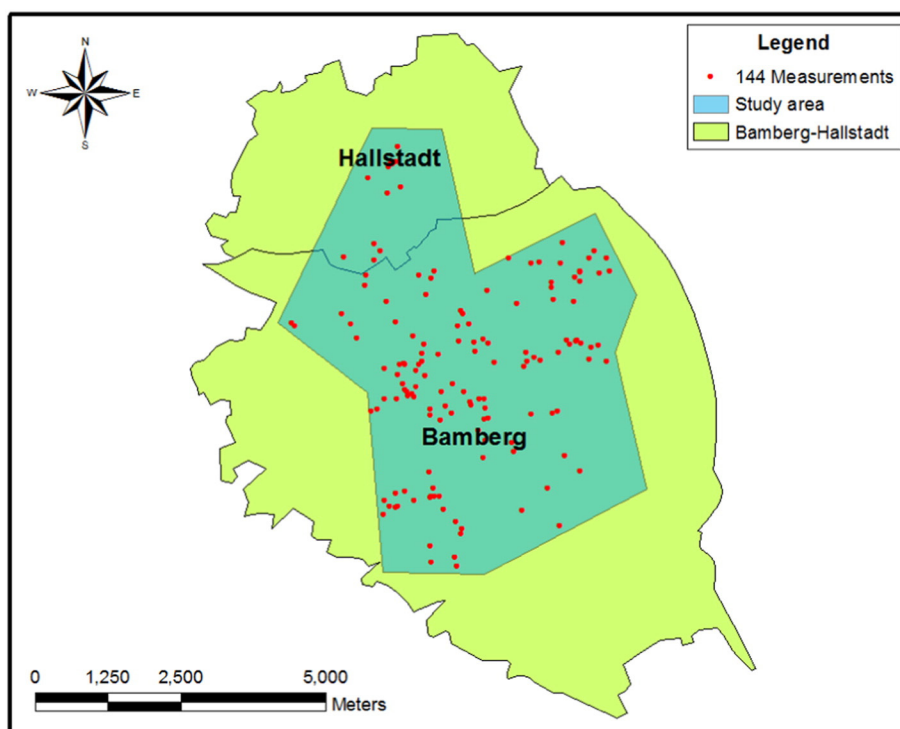


Fig. 2. Location of the 144 measurements points in Bamberg and Hallstadt in the study area.

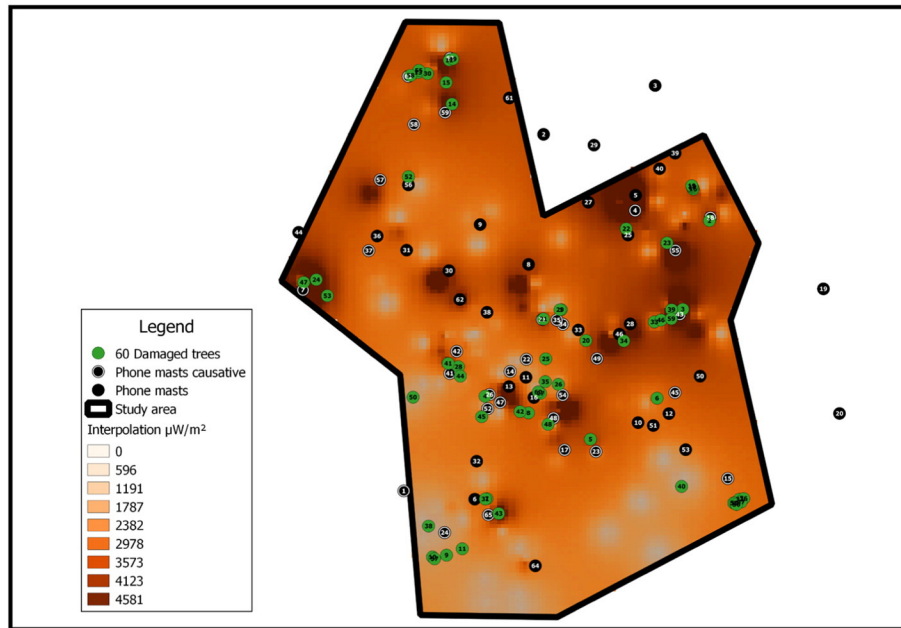


Fig. 3. Map showing the 60 damaged trees and phone masts (both with code numbers) over the interpolation electromagnetic map of the 144 measurement points.

performed in about 200 sampling points (own data). Repeatability analysis checked this. Despite the fact that the increase in sector antennas (observed between 2011 and 2015) would have probably increased the radiation in the environment of the study area, measurements used in this study were mostly done in 2015.

In an attempt to link the electromagnetic radiation measured at every tree to specific phone masts, the distances to the three nearest antennas that could be mainly responsible for the radiation measurements at each tree were calculated in meters with Geographical Information System (GIS) programs, following the general approach criteria of proximity. However, it must be taken into account that buildings and vegetation diminish radiation intensity and, in many cases, the nearest phone mast or masts may be obscured by obstacles. In other cases, the phone mast is in direct line of sight from the tree and the radiation can reach the tree directly.

Additionally, 30 random points were generated inside the polygonal study area and outside a layer of buildings, downloaded from: <http://www.mapcruzin.com/free-germany-arcgis-maps-shapefiles.htm> using a Random Points tool of QGIS 2.6.0-Brighton (QGIS Development Team, 2014) allowing create random points inside a specific layer. Therefore the points were randomly situated in specific places in the study area outside buildings but not frequently concur with the location of trees. That is why measurements were taken from the nearest tree for each random point, generating a random tree group. Measurements and damage characteristics were scored in the same way as with 60 damaged trees explained above, measuring the maximum value of radiation corresponding to opposite sides of each tree.

In areas of the city with low measurements of electromagnetic radiation (no visual contact to any phone mast and power flux density $<50 \mu\text{W}/\text{m}^2$), we scored another 30 trees in the same way as with 60 damaged trees and 30 random points. The UTM coordinates and the three nearest phone masts of each tree in these last two groups (random and low radiation trees) were also recorded.

To generate electromagnetic maps, we used ArcGIS 9.3 (ESRI, 2008) and QGIS 2.6.0-Brighton (QGIS Development Team, 2014). To check possible differences between groups of data and taking into account that there were two measures made in each tree, repeated measures analysis of variance were applied, considering a repeated measures factor (within-subjects) and another between-subjects. The post hoc

Bonferroni test was used in all cases to elucidate significant differences. Statistics were performed using STATISTICA 7 program (StatSoft, Inc, 2004).

3. Results

The results of radiation measurements obtained at 144 points in Bamberg and Hallstadt at a height of 1.5 m were between $6 \mu\text{W}/\text{m}^2$ ($0.047 \text{ V}/\text{m}$) and $17,060 \mu\text{W}/\text{m}^2$ ($2.53 \text{ V}/\text{m}$) (for measurements and UTM coordinates, see Table 3). The measured values are far below the current limit values ($41 \text{ V}/\text{m}$ for GSM system and $61 \text{ V}/\text{m}$ for UMTS; ICNIRP, 1998).

The locations of these points in the study area are shown in Fig. 2. By interpolation of the 144 measurements points (Table 3), we prepared a map of the power flux density in Bamberg and Hallstadt (Fig. 3). This map is theoretical and approximate, since many factors affect the true electromagnetic values. However, the map is useful to provide approximate differences in exposure (electromagnetic pollution) throughout the city.

The 60 selected trees showing damage patterns not attributable to diseases, pests or other environmental factors are presented in Table 4. In this Table, we added the tree code number, the scientific name, the UTM coordinates, the measurements (power flux density) on both sides of each tree, and the distances (meters) and code numbers to the three nearest antennas for each tree, which may be mainly responsible for the electromagnetic radiation measured. We also included the orientation of the tree damage and the number of main (nearest) phone mast(s) in direct line of sight, whose lobe of radiation most directly affected each tree. Finally, we included the codes of damage observed in the 60 trees.

From all 60 selected trees, one or more phone mast(s) could be seen, with no obstacles between the phone mast and damaged tree. In many cases, one of the three closest antennas caused the main radiation on the tree surface. In ten trees (codes: 4, 7, 9, 10, 15, 26, 27, 31, 35, and 50), another antenna in direct line of sight caused the measured radiofrequency exposure. This was determined using topography and existing buildings (Table 4 and Fig. 3).

The 60 damaged trees (with their code number) and the phone masts are overlaid on the electromagnetic map prepared by interpolation of the 144 measurements points (Fig. 3). The likely antenna or

Table 4 (continued)

37	<i>Robinia pseudoacacia</i>	638619	5526874	660	240	15	350,5	53	985,3	12	1476	NW	15	+			+		+							+	
38	<i>Sorbus occuparia</i>	634587	5526564	84	8	24	223,4	1	555,7	6	690,2	N	1	+	+	+		+	+	+		+					
39	<i>Acer negundo</i>	637722	5529366	3060	310	43	122,3	28	562,9	46	743,9	SE	43	+	+			+	+			+				+	+
40	<i>Acer saccharinum</i>	637852	5527078	840	180	53	477,9	15	604,7	51	868,4	E	15	+	+			+									
41	<i>Juglans regia</i>	634841	5528669	4500	590	41	129,6	42	191,4	26	668,2	N, E	42	+	+			+	+	+	+	+					
42	<i>Taxus baccata</i>	635767	5528046	300	70	16	255,3	47	282,7	13	354,2	NW	47	+	+			+								+	+
43	<i>Taxus baccata</i>	635491	5526727	8970	190	65	133,2	6	359,3	32	734,2	W	65	+	+			+								+	+
44	<i>Taxus baccata</i>	634997	5528506	2500	240	41	140,4	42	324,6	26	446,9	N,E,W	41,42		+			+								+	+
45	<i>Taxus baccata</i>	635272	5527980	2700	70	52	130	47	302,8	26	303,6	NE	52	+	+			+								+	+
46	<i>Taxus baccata</i>	637586	5529231	1520	190	43	253,1	28	399	46	567	E	43	+	+											+	+
47	<i>Thuja occidentalis</i>	632975	5529719	910	30	7	98,51	44	651,3	37	936,1	S	7	+	+			+								+	
48	<i>Thuja occidentalis</i>	636128	5527881	120	10	48	105,6	16	393,2	17	393,6	S	17	+	+			+								+	
49	<i>Thuja occidentalis</i>	634900	5532611	13000	520	60	37,36	63	616,5	59	700,2	NW	60	+	+			+								+	
50	<i>Thuja occidentalis</i>	634387	5528232	290	50	41	565,8	42	818,5	52	974,3	S	1	+	+			+	+							+	
51	<i>Picea pungens</i>	638525	5526863	770	90	15	326,2	53	927,6	12	1427	NE	15	+	+			+								+	
52	<i>Picea pungens</i>	634328	5531086	3080	310	56	104	57	367,3	58	681,7	W	57		+			+							+	+	
53	<i>Picea pungens</i>	633280	5529546	1350	200	7	323,8	37	792,7	44	900,5	W	7	+	+			+		+					+	+	
54	<i>Pinus sylvestris</i>	638542	5526861	790	50	15	332,6	53	940,5	12	1439	NE	15		+			+		+	+	+			+	+	
55	<i>Pinus sylvestris</i>	634461	5532462	5300	130	63	154,9	60	433,2	59	641	SW	63	+	+											+	
56	<i>Pseudotsuga menziesii</i>	638560	5526844	1720	60	15	354,2	53	965,2	12	1463	NE	15	+	+			+	+						+	+	
57	<i>Juniperus communis</i>	634664	5526141	160	20	24	363,1	65	897,6	6	929,4	N	24	+	+			+							+	+	
58	<i>Corylus avellana</i> 'Contorta'	634355	5532399	420	80	63	31,78	60	555,3	58	636,5	W	63	+	+	+		+	+								
59	<i>Corylus avellana</i>	637720	5529249	3880	720	43	121,7	28	534,2	46	700,2	N	43	+	+	+		+								+	
60	<i>Symphoricarpos albus</i>	636002	5528299	1200	320	16	90,27	11	248,5	54	316,5	E	54	+	+			+	+							+	

In the five most represented species ($n \geq 4$) among the 60 affected trees, most trees showed damage only on one side: unilateral damage (Damage code 1, Tables 2 and 4). By species and percentages: *Acer platanoides* (86%), *Carpinus betulus* (88%), *Tilia* sp. (100%), *Taxus baccata* (80%) and *Thuja occidentalis* (100%). On the seven trees not given code 1, the damage spread over the whole tree, but trees still showed side differences. Most of these trees were characterized with sparse leaves or needles (crown transparency) (Damage code 2, Tables 2 and 4). By species and percentages: *Acer platanoides* (86%), *Carpinus betulus* (100%), *Taxus baccata* (100%) and *Thuja occidentalis* (100%). In many of the trees with the one-sided damage, the leaves turned prematurely yellow or brown in June – this always began at the leaf margins (Damage code 3, Tables 2 and 4). The species with higher percentages were: *Acer platanoides* (86%) and *Carpinus betulus* (100%). In many trees leaves fall prematurely: *Acer platanoides* (93%), *Carpinus betulus* (100%) and *Tilia* sp. (100%) (Damage code 5, Tables 2 and 4). Many trees of the species *Acer platanoides* (80%), *Taxus baccata* (80%) and *Thuja occidentalis* (100%) had dead branches (Peak branches dried) (Damage code 6, Tables 2 and 4). All the trees of the species *Taxus baccata* (100%) and *Thuja occidentalis* (100%) exhibited color change of the needles (Damage code 10, Tables 2 and 4). Finally, in all trees of the species *Taxus baccata*, dead parts were trimmed (Damage code 11, Tables 2 and 4). Some trees stopped growing in height while, in others, the main guide died (see Tables 2 and 4).

The 30 randomly selected trees are presented in Table 5 with the tree code number, the scientific name, the UTM coordinates, the measurements (power flux density) on both sides of each tree, the distance (meters) to the three nearest antennas, their code number and the damage codes. Trees in these locations may be in areas with either high or low radiation. Seventeen trees in this group were situated in places with low radiation and showed no signs of damage. The measurements were 8–50 $\mu\text{W}/\text{m}^2$ (0.054–0.137 V/m) and showed no

difference between the two opposite sides. Thirteen trees stood in the radiation field of one or more phone mast. Six of these had damage only on the side facing a phone mast, and five had damages on other sides. The measurements on the exposed sides were 40–4600 $\mu\text{W}/\text{m}^2$ (0.122–1.316 V/m).

The 30 trees selected in areas with low radiation (radio shadow of hills, buildings or trees) are presented in Table 6 with the tree code number, scientific name, UTM coordinates, measurements (power flux density) on both sides of each tree, distance (meters) to the three nearest antennas, their code number and the damage codes. All trees selected in low radiation areas showed no damage (code 13). The power flux density values measured were 3–40 $\mu\text{W}/\text{m}^2$ (0.033–0.122 V/m) and no significant differences were found between the two opposite sides.

The trees in random points and the trees in areas of low radiation are represented in Fig. 4 over the electromagnetic map prepared by interpolation of the 144 measurements points.

We performed a Repeated Measures ANOVA analysis in order to include the measurements of the exposed and shielded side of each tree (R1 = within subjects factor) in the three groups of trees (damaged, random, and low radiation), and to avoid pseudoreplication. The comparisons of all factor levels revealed significant differences, including the interaction between factors. A post hoc Bonferroni comparisons test, recommended for different sized groups of samples, revealed significant differences between measurements from the exposed side of damaged trees and all other groups (Table 7). Fig. 5 shows the measurements (mean and standard error) in all groups.

In the “Random points” group of trees, we performed another Repeated Measures ANOVA (R1 = within subjects factor) for trees damaged and undamaged within this group (Table 8). The results showed significant differences in both factors, including the interaction, which means that depending on the group of tree (damaged or undamaged),

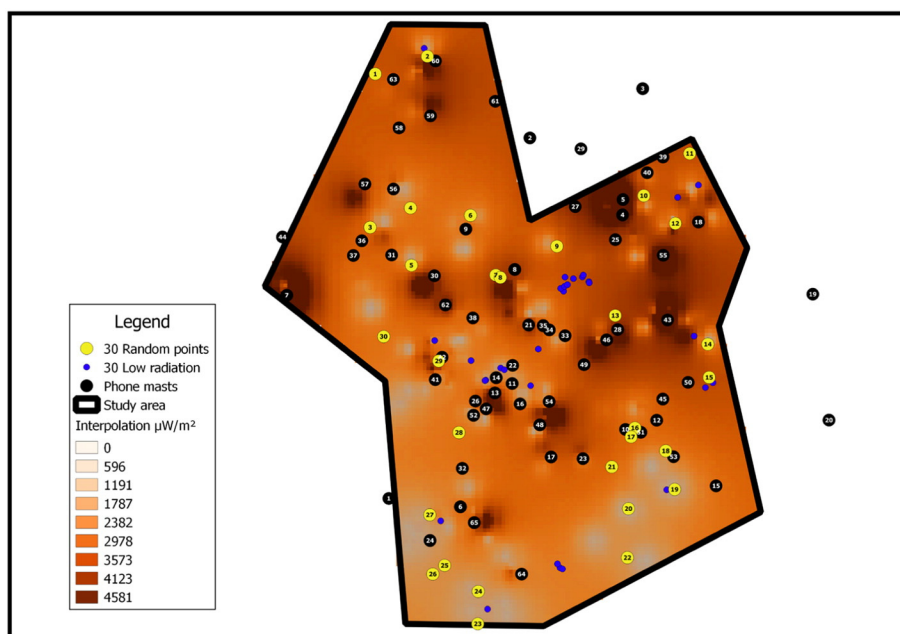


Fig. 4. Map showing the 30 trees at random points and the 30 trees in areas of low radiation (both with code numbers) over the interpolation electromagnetic map of the 144 measurement points. Phone masts (with code numbers) are also represented.

there were no unilateral damages. The measured values were below $50 \mu\text{W}/\text{m}^2$ ($0.137 \text{ V}/\text{m}$) and there was no difference between opposite sides. These results in the three groups point to a connection between unilateral tree damage and RF exposure.

In the electromagnetic field of all mobile phone base stations visited numerous tree damages were observed. The damage occurred in temporal relation with the putting into operation of new mobile phone base stations. Woody plants of all species are affected (deciduous and coniferous trees as well as shrubs).

In the five most represented species ($n \geq 4$) among the 60 damaged trees (*Acer platanoides*, *Carpinus betulus*, *Tilia* sp., *Taxus baccata* and *Thuja occidentalis*), most trees showed damage only on one side (Damage code 1, Tables 2 and 4). Most of these trees were characterized with sparse leaves or needles (crown transparency) (Damage code 2, Tables 2 and 4). In many of the trees with the one-sided damage, the leaves turned prematurely yellow or brown in June – this always began at

the leaf margins (Damage code 3, Tables 2 and 4). In many trees leaves fall prematurely (Damage code 5, Tables 2 and 4) or had dead branches (Peak branches dried) (Damage code 6, Tables 2 and 4). Some trees stopped growing in height while, in others, the main guide died (see Tables 2 and 4).

The differences in susceptibility of different species could be related to radiofrequency energy absorption properties of the trees (e.g., dielectric property). Perhaps this study cannot answer questions about these differences, however it is quite possible that differences are related to the electrical conductivity, related also with the density of the wood (species of fast or slow growth) and particularly with the percentage of water in the tissues. Poplars and aspen that grow near rivers and water bodies in Spain seem to be particularly sensitive to the effects of radiation. But the waves reflection in the water could also influence.

The results presented here lead us to conclude that damage found in the selected trees is caused by electromagnetic radiation from phone

Table 7

Repeated measures ANOVA analysis and Bonferroni post hoc comparisons ($p < 0.01$ values with *) in the three types of trees (damaged, random, and low radiation). Measurement Side 1/2 correspond to the maximum/minimum value of radiation respectively for the opposite sides of each tree.

		SS	Degr. of	MS	F	p		
Intercept		62663309	1	62663309	25.81460	0.000001*		
Type of tree		52931692	2	26465846	10.90280	0.000046*		
Error		284010086	117	2427437				
R1		33197069	1	33197069	18.28694	0.000039*		
R1*Type of tree		44608664	2	22304332	12.28656	0.000014*		
Error		212395158	117	1815343				
Type of tree	R1		{1}	{2}	{3}	{4}	{5}	{6}
1	Damaged	Measurement Side1		0.000000*	0.001829*	0.000001*	0.000000*	0.000000*
2	Damaged	Measurement Side2	0.000000*		1.000000	1.000000	1.000000	1.000000
3	Random	Measurement Side1	0.001829*	1.000000		1.000000	1.000000	1.000000
4	Random	Measurement Side2	0.000001*	1.000000	1.000000		1.000000	1.000000
5	Low radiation	Measurement Side1	0.000000*	1.000000	1.000000	1.000000		1.000000
6	Low radiation	Measurement Side2	0.000000*	1.000000	1.000000	1.000000	1.000000	

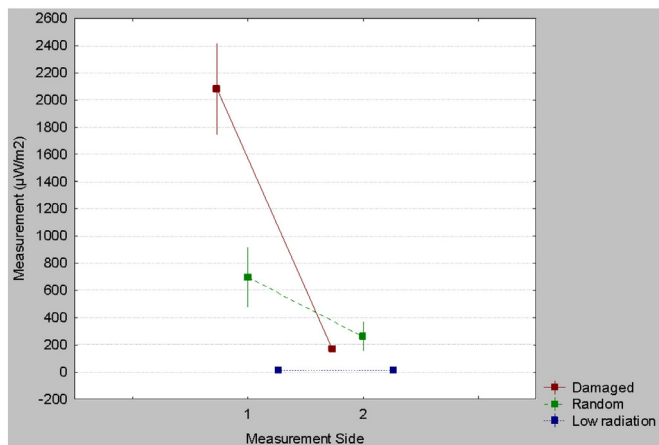


Fig. 5. Differences between measurements in both sides for the three different tree groups: damaged, random, and low radiation. Measurement Side 1/2 correspond to the maximum/minimum value of radiation respectively for the opposite sides of each tree. The bars represent means \pm standard errors. The central point represents the mean and the straight line \pm 0.95*SE.

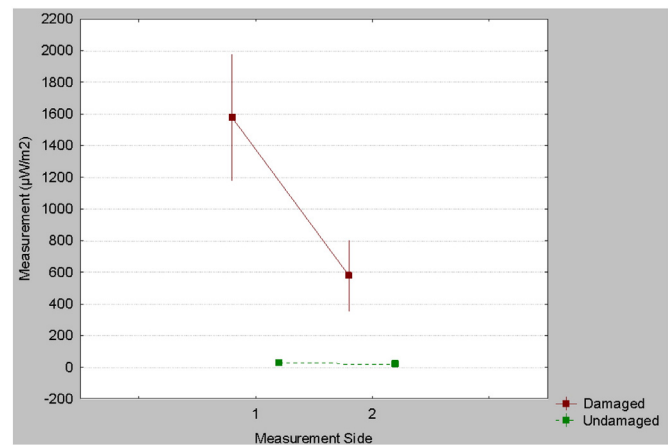


Fig. 6. Differences between measurements in both sides for the damaged and undamaged trees within the random trees group. Measurement side 1/2 correspond to the maximum/minimum value of radiation respectively for the opposite sides of each tree. The bars represent means \pm standard errors. The central point represents the mean and the straight line \pm 0.95*SE.

masts, as we proposed in previous studies (Balmori, 2004; Waldmann-Selsam, 2007; Waldmann-Selsam and Eger, 2013; Balmori, 2014). Interested parties are able to locate the damaged trees found in this work in Bamberg and Hallstadt with their UTM coordinates. However, trees with code numbers 20, 38 and 48 (Table 4) have been cut down and removed.

Research on the effects of radiation from phone masts is advancing rapidly. In February 2011 the first symposium on the effects of electromagnetic radiation on trees took place in Baarn, Netherlands (Schorpp, 2011 - <http://www.boomaantastingen.nl/>), where similar effects and results to those found in the current paper were presented.

Although there are some related experiments that show no effect of long-term exposure (3,5 years), 2450-MHz (continuous wave) and power flux densities from 0.007 to 300 W/m² on crown transparency, height growth and photosynthesis of young spruce and beech trees (Schmutz et al., 1996), this result may not be transferred to modulated 2450-MHz or to other pulsed and modulated frequencies. In addition, an increasing number of studies have highlighted biological responses and modifications at the molecular and whole plant level after exposure to high frequency electromagnetic fields (Vian et al., 2016). Plants can perceive and respond to various kinds of electromagnetic radiation over a wide range of frequencies. Moreover, a low electric field intensity (5 V/m) was sufficient to evoke morphological responses (Grémiaux et al., 2016). Electromagnetic radiation impacts at physiological and

ecological levels (Cammaerts and Johansson, 2015), and evokes a multitude of responses in plants. The effects of high frequency electromagnetic fields can also take place at the subcellular level: it can alter the activity of several enzymes, including those of reactive oxygen species (ROS) metabolism, a well-known marker of plant responses to various kinds of environmental factors; it evokes the expression of specific genes previously implicated in plant responses to wounding (gene expression modifications), and modifies the growth of the whole plants (Vian et al., 2016). It could be hypothesized that membrane potential variations in response to electromagnetic radiation exposure may initiate electrical waves of depolarization (AP and/or VP) that could initiate immediate or delayed growth responses (Grémiaux et al., 2016). It has been proposed that electromagnetic fields act similarly in plants and in animals, with the probable activation of calcium channels via their voltage sensor (Pall, 2016).

Electromagnetic radiation (1800 MHz) interferes with carbohydrate metabolism and inhibits the growth of *Zea mays* (Kumar et al., 2015). Furthermore, cell phone electromagnetic radiation inhibits root growth of the mung bean (*Vigna radiata*) by inducing ROS-generated oxidative stress despite increased activities of antioxidant enzymes (Sharma et al., 2009). Germination rate and embryonic stem length of *Triticum aestivum* was also affected by cell phone radiation (Hussein and El-Maghraby, 2014). After soybeans were exposed to weak microwave radiation from the GSM 900 mobile phone and base station, growth of

Table 8
Repeated measures ANOVA analysis and Bonferroni post hoc comparisons ($p < 0.01$ values with *) in the random trees group. Measurement Side 1/2 correspond to the maximum/minimum value of radiation respectively for the opposite sides of each tree.

	SS	Degr. of	MS	F	p	
Intercept	17829607	1	17829607	16.60985	0.000343*	
13 code	16391606	1	16391606	15.27023	0.000538*	
Error	30056202	28	1073436			
R1	3701923	1	3701923	16.73250	0.000329*	
R1*13 code	3627579	1	3627579	16.39647	0.000368*	
Error	6194761	28	221241			
	13 code	R1	{1}	{2}	{3}	{4}
1	Undamaged	Measurement Side 1		1.000000	0.002129*	0.416303
2	Undamaged	Measurement Side 2	1.000000		0.000034*	0.927155
3	Damaged	Measurement Side 1	0.002129*	0.000034*		0.000055*
4	Damaged	Measurement Side 2	0.416303	0.927155	0.000055*	

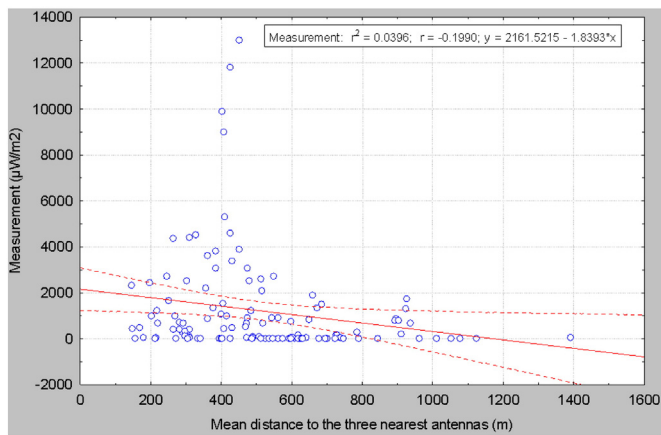


Fig. 7. Scatterplot showing the correlation between measurements from each of the 120 trees and the mean distance to the three nearest antennas. Dashed lines represent the 0.95 confidence interval.

epicotyl and hypocotyl was reduced, whereas the outgrowth of roots was stimulated. These findings indicate that the observed effects were significantly dependent on field strength as well as amplitude modulation of the applied field (Halgamuge et al., 2015). Phone mast radiation also affects common cress (*Lepidium sativum*) seed germination (Cammaerts and Johansson, 2015). In *Arabidopsis thaliana*, the long term exposure to non ionizing radiation causes a reduction in the number of chloroplasts as well as the decrease of stroma thylakoids and the photosynthetic pigments (Stefi et al., 2016). Finally, low-intensity exposure to radiofrequency fields can induce mitotic aberrations in root meristematic cells of *Allium cepa*; the observed effects were markedly dependent on the frequencies applied as well as on field strength and modulation (Tkalec et al., 2009).

In general, polarization from man-made electromagnetic radiation appears to have a greater bioactive effect than natural radiation, and significantly increases the probability for initiation of biological or health effects (Panagopoulos et al., 2015).

Tree damages as in Bamberg and Hallstadt were documented by the authors in several countries: Spain (Valladolid, Salamanca, Madrid, Palencia, León), Germany (Munich, Nürnberg, Erlangen, Bayreuth, Neuburg/Donau, Garmisch-Partenkirchen, Murnau, Stuttgart, Kassel, Fulda, Göttingen, biosphere reserve Rhön, Tegernsee Valley and in several small towns), Austria (Graz), Belgium (Brussels) and Luxemburg.

Each phone mast can harm many trees and each tree can be affected by several phone masts belonging to the same or different base stations. Damaged trees seem to exist around each antenna and the several million phone masts in the world could potentially be damaging the growth and health of millions of trees. This can occur not only in cities, but also in well-preserved forests, and in natural and national parks, where base stations are being installed without the necessary prior environmental impact studies, due to a lack of knowledge of the problem. For this reason, it is essential for an assessment on the environmental impact of any new base station prior to implementation.

Additionally, phone masts can cause a drop in timber productivity in plantations of pine, poplar, etc., as well as fruits, nuts, etc. Thus, the industry must be required to pay damages to plantation owners. Similarly, as trees are a common social good, the industry should compensate for damaged and dead trees around the world due to radiation. Further, the money spent by municipalities to repair or replace damaged trees should enter into the computation of costs/benefits of this technology. For installation of any new technology, the burden of proof should be to the industry that requires demonstration of safety prior to deployment.

Electromagnetic radiation from telecommunication antennas affect the abundance and composition of wild pollinators in natural habitats and these changes in the composition of pollinator communities

associated with electromagnetic smog may have important ecological and economic impacts on the pollination service that could significantly affect the maintenance of wild plant diversity, crop production and human welfare (Lázaro et al., 2016).

Evidence for plant damage due to high frequency electromagnetic radiation was not taken into account in determining the current statutory regulations (the limit values). Once the problem becomes evident, the guidelines of radiation emitted by the antennas should be reviewed. Proper risk assessment of electromagnetic radiation should be undertaken to develop management strategies for reducing this pollution in the natural environment (Kumar et al., 2015).

Moreover, due to the lack of recognition, certain modern projects with interesting ideas for decreasing environmental pollution could have opposite effects than expected. For example, in the Netherlands, the TreeWiFi project (<http://treewifi.org/>), which aims to motivate people to use bikes and public transport in order to reduce the [NO₂] pollution providing free WiFi when air quality improves, could be favoring electromagnetic pollution with even more harmful effects as it has been demonstrated in this manuscript (see also: <http://www.greenpeace.org/canada/fr/Blog/le-wi-fi-tuerait-les-ar-bres/blog/33569/>).

In addition, the number of sector antennas has increased in Bamberg and this increase appears to be accelerating: 483 sector antennas in 2011 and 779 sector antennas in 2015. Both radiation and damaged trees represent a loss of quality of life for citizens. This study began after finding that patients who claimed to be affected by phone masts, referred to as radiation, live in areas where affected trees and plants are located. Evidence of radiation damage was even found in potted plants inside patient homes (Waldmann-Selsam and Eger, 2013). Thus, this study is certainly complementary to the study by Eger and Jahn (2010) and other research that has shown effects on the health of people by phone masts located in their vicinity (Santini et al., 2002; Eger et al., 2004; Wolf and Wolf, 2004; Abdel-Rassoul et al., 2007; Khurana et al., 2010; Dode et al., 2011; Gómez-Perretta et al., 2013; Shahbazi-Gahrouei et al., 2014; Belyaev et al., 2015).

In the introduction to the International Seminar on “Effects of Electromagnetic Fields on the Living Environment” in 1999 in Ismaning, Germany, organized by WHO, ICNIRP and German Federal Office for Radiation Protection (BfS), M. Repacholi, head of the International EMF Project of the WHO, said: “By comparison, influences of these fields on plants, animals, birds and other living organisms have not been properly examined. Given that any adverse impacts on the environment will ultimately affect human life, it is difficult to understand why more work has not been done. There are many questions that need to be raised: ...” and “...it seems that research should focus on the long-term, low-level EMF exposure for which almost no information is available. Specific topics that need to be addressed include: ... EMF influences on agricultural plants and trees” (Matthes et al., 2000).

5. Conclusions

In this study we found a high-level damage in trees within the vicinity of phone masts. Preliminary laboratory studies have indicated some deleterious effects of radiofrequency radiation. However, these early warnings have had no success and deployment has been continued without consideration of environmental impact.

We observed trees with unilateral damage in the radiation field of phone masts. We excluded the possibility that root injury due to construction work or air pollutants could have caused the unilateral damage. We found out that from the damaged side there was always visual contact to one or more phone mast (s).

Statistical analyses demonstrated that the electromagnetic radiation from cellphone towers is harmful to trees. Results show that the measurements in the most affected sides of damaged trees (i.e. those that withstand higher radiation levels) are different to all other groups. These results are consistent with the fact that damage inflicted on

trees by cellphone towers usually start on one side, extending to the whole tree over time.

The occurrence of unilateral damage is the most important fact in our study and an important argument for a causal relationship with RF-EMF, as it supplies evidence for non-thermal RF-EMF effects. This constitutes a danger for trees worldwide. The further deployment of phone masts has to be stopped. Scientific research on trees under the real radiofrequency field conditions must continue.

Acknowledgements

The work presented here was carried out without any funding. Francisco Cabrero and José Ignacio Aguirre from the Department of Zoology, University Complutense of Madrid suggested the interpolation points on the map of radiation. This paper is dedicated in memoriam to the great Swedish researcher and courageous man, Örjan Hallberg. Authors have not a conflict of interest to declare.

References

- Abdel-Rassoul, G., El-Fateh, O.A., Salem, M.A., Michael, A., Farahat, F., El-Batanouny, M., Salem, E., 2007. Neurobehavioral effects among inhabitants around mobile phone base stations. *Neurotoxicology* 28, 434–440.
- Balmori, A., 2004. Pueden afectar las microondas pulsadas emitidas por las antenas de telefonía a los árboles y otros vegetales? *Ecosistemas* 13, 79–87.
- Balmori, A., 2014. Electromog and species conservation. *Sci. Total Environ.* 496, 314–316.
- Balmori, A., 2015. Anthropogenic radiofrequency electromagnetic fields as an emerging threat to wildlife orientation. *Sci. Total Environ.* 518, 58–60.
- Balodis, V.G., Brumelis, K., Kalviskis, O., Nikodemus, D., Tjarve, V.Z., 1996. Does the Skrunda Radio Location Station diminish the radial growth of pine trees? *Sci. Total Environ.* 180, 57–64.
- Beauvois, E., Girard, S., Lallechere, S., Davies, E., Paladian, F., Bonnet, P., Ledoit, G., Vian, A., 2007. Intercellular communication in plants: evidence for two rapidly transmitted systemic signals generated in response to electromagnetic field stimulation in tomato. *Plant Cell Environ.* 30, 834–844.
- Belyaev, I., 2010. Dependence of non-thermal biological effects of microwaves on physical and biological variables: implications for reproducibility and safety standards. In: Giuliani, L., Soffritti, M. (Eds.), *European Journal of Oncology - Library Non-thermal effects and mechanisms of interaction between electromagnetic fields and living matter*. ICEMS Monograph vol. 5. RAMAZZINI INSTITUTE, Bologna, Italy (<http://www.icems.eu/papers.htm?f=-/c/a/2009/12/15/MNHJ1B49KH.DTL>).
- Belyaev, I., Dean, A., Eger, H., Hubmann, G., Jandrisovits, R., Johansson, O., Moshhammer, H., Kern, M., Kundi, M., Lercher, P., Mosgoller, W., Moshhammer, H., Muller, K., Oberfeld, G., Ohnsorge, P., Pelzmann, P., Scheingraber, C., Thill, R., 2015. EUROPAEM EMF Guideline 2015 for the prevention, diagnosis and treatment of EMF-related health problems and illnesses. *Rev. Environ. Health* 30, 337–371.
- Bernatzky, A., 1986. Elektromagnetischer Smog – Feind des Lebens. *Der Naturarzt* 11, 22–25 (<http://www.diewellenbrecher.de/pdf/bernatzky.pdf>).
- Brauer, I., 1950. Experimentelle Untersuchungen über die Wirkung von Meterwellen verschiedener Feldstärke auf das Teilungswachstum der Pflanzen. *Chromosoma* 3, 483–509 (<http://www.springerlink.com/content/kqn177g8g5114787/>, letzter Zugriff: 30.5.2013).
- Cammaerts, M.C., Johansson, O., 2015. Effect of man-made electromagnetic fields on common Brassicaceae *Lepidium sativum* (cress d'Alinois) seed germination: a preliminary replication study. *Fyton* 84, 132–137.
- Dode, A.C., Leão, M.M., de AF Tejo, F., Gomes, A.C., Dode, D.C., Dode, M.C., Caiiffa, W.T., 2011. Mortality by neoplasia and cellular telephone base stations in the Belo Horizonte municipality, Minas Gerais state, Brazil. *Sci. Total Environ.* 409, 3649–3665.
- Eger, H., Uwe, K., Hagen, B., Lucas, P., Vogel, P., Voit, H., 2004. Einfluss der räumlichen Nähe von Mobilfunksendeanlagen auf die Krebsinzidenz. *Umwelt Med. Ges.* 17, 326–332.
- Eger, H., Jahn, M., 2010. Specific symptoms and radiation from mobile basis stations in Selbitz, Bavaria, Germany: evidence for a dose-effect relationship (original article in German). *Umwelt Med. Ges.* 23, 130–139.
- ESRI (Environmental Systems Research Institute), 2008. ArcMap 9.3 (Build 1770). ESRI® ArcGIS, 9, 1999–2008.
- Gómez-Perretta, C., Navarro, E.A., Segura, J., Portolés, M., 2013. Subjective symptoms related to GSM radiation from mobile phone base stations: a cross-sectional study. *BMJ open* 3 (12), e003836.
- Grémiaux, A., Girard, S., Guérin, V., Lothier, J., Baluška, F., Davies, E., Bonnet, P., Vian, A., 2016. Low-amplitude, high-frequency electromagnetic field exposure causes delayed and reduced growth in *Rosa hybrid*. *J. Plant Physiol.* 190, 44–53.
- Haggerty, K., 2010. Adverse influence of radio frequency background on trembling aspen seedlings: preliminary observations. *Int. J. For. Res.* 2010, 836278.
- Halgamuge, M.N., Yak, S.K., Eberhardt, J.L., 2015. Reduced growth of soybean seedlings after exposure to weak microwave radiation from GSM 900 mobile phone and base station. *Bioelectromagnetics* 36, 87–95.
- Harte, C., 1950. Mutationsauslösung durch Ultrakurzwellen. *Chromosoma* 3, 140–147.
- Harte, C., 1972. Auslösung von Chromosomenmutationen durch Meterwellen in Pollenmutterzellen von *Oenothera*. *Chromosoma* 36, 329–337 (<http://www.springerlink.com/content/x32049jrnrm4u7858/>).
- Hussein, R.A., El-Maghraby, M.A., 2014. Effect of two brands of cell phone on germination rate and seedling of wheat (*Triticum aestivum*). *J. Environ. Pollut. Human Health* 2, 85–90.
- IARC, 2013. IARC Monographs on the Evaluation of Carcinogenic Risks to Humans. Non-ionizing Radiation, Part 2: Radiofrequency Electromagnetic Fields vol. 102. IARC Press, Lyon, France (<http://monographs.iarc.fr/ENG/Monographs/vol102/mono102.pdf>).
- I. C. N. I. R. P., 1998. Guidelines for limiting exposure to time-varying electric, magnetic, and electromagnetic fields (up to 300 GHz). *Health Phys.* 74 (4), 494–522.
- Jayasanka, S.M.D.H., Asaeda, T., 2013. The significance of microwaves in the environment and its effect on plants. *Environ. Rev.* 22, 220–228.
- Jerman, I., Berden, M., Ruzic, R., Skarja, M., 1998. Biological effects of TV set electromagnetic fields on the growth of spruce seedlings. *Electromagn. Biol. Med.* 17, 31–42.
- Kiepenheuer, K.O., Brauer, I., Harte, C., 1949. Über die Wirkung von Meterwellen auf das Teilungswachstum der Pflanzen. *Naturwissenschaften* 36, 27.
- Kundu, A., IEEE, 2013. Specific Absorption Rate evaluation in apple exposed to RF radiation from GSM mobile towers. *IEEE Applied Electromagnetics Conference (AEMC)*. IEEE, pp. 1–2 (ISBN 978-1-4799-3266-5).
- Khurana, V.G., Hardell, L., Everaert, J., Bortkiewicz, A., Carlberg, M., Ahonen, M., 2010. Epidemiological evidence for a health risk from mobile phone base stations. *Int. J. Occup. Environ. Health* 16, 263–267.
- Kumar, A., Singh, H.P., Batish, D.R., Kaur, S., Kohli, R.K., 2015. EMF radiations (1800 MHz)-inhibited early seedling growth of maize (*Zea mays*) involves alterations in starch and sucrose metabolism. *Protoplasma* 1–7.
- Lázaro, A., Chroni, A., Tscheulin, T., Devaléz, J., Matsoukas, C., Petanidou, T., 2016. Electromagnetic radiation of mobile telecommunication antennas affects the abundance and composition of wild pollinators. *J. Insect Conserv.* 1–10 <http://dx.doi.org/10.1007/s10841-016-9868-8>.
- Lerchl, D., Lerchl, A., Hantsch, P., et al., 2000. Studies on the effects of radio-frequency fields on conifers. Kurzzusammenfassung auf der Tagung der Bioelectromagnetics Society in München. http://www.boomaantastingen.nl/EMF_and_conifers%5B1%5D.pdf.
- Matthes, R., Bernhardt, J.H., Repacholi, M.H., 2000. Effects of electromagnetic fields on the living environment. *Proceedings International Seminar on Effects of Electromagnetic Fields on the Living Environment – Ismaning, Germany, October 4 and 5, 1999*, ICNIRP 10/2000.
- Meng, Y.S., Lee, Y.H., 2010. Investigations of foliage effect on modern wireless communication systems: a review. *Prog. Electromagn. Res.* 105, 313–332.
- Pall, M., 2016. Electromagnetic fields act similarly in plants as in animals: probable activation of calcium channels via their voltage sensor. *Curr. Chem. Biol.* (<http://benthamscience.com/journals/current-chemical-biology/article/141390/>).
- Panagopoulos, D.J., Johansson, O., Carlo, G.L., 2015. Polarization: a key difference between man-made and natural electromagnetic fields, in regard to biological activity. *Sci. Rep.* 5, 14914. <http://dx.doi.org/10.1038/srep14914>.
- Panagopoulos, D.J., Cammaerts, M.C., Favre, D., Balmori, A., 2016. Comments on environmental impact of radiofrequency fields from mobile phone base stations. *Crit. Rev. Environ. Sci. Technol.* <http://dx.doi.org/10.1080/10643389.2016.1182107>.
- Pesnya, D.S., Romanovsky, A.V., 2013. Comparison of cytotoxic and genotoxic effects of plutonium-239 alpha particles and mobile phone GSM 900 radiation in the *Allium cepa* test. *Mutat. Res. Genet. Toxicol. Environ. Mutagen.* 750, 27–33.
- QGIS Development Team, 2014. Quantum GIS geographic information system version 2.6.0-Brighton [Internet]. <http://qgis.osgeo.org>.
- Roux, D., Vian, A., Girard, S., Bonnet, P., Paladian, F., Davies, E., Ledoit, G., 2006. Electromagnetic fields (900 MHz) evoke consistent molecular responses in tomato plants. *Physiol. Plant.* 128, 283–288.
- Roux, D., Vian, A., Girard, S., Bonnet, P., Paladian, F., Davies, E., Ledoit, G., 2008. High frequency (900 MHz) low amplitude (5 V m⁻¹) electromagnetic field: a genuine environmental stimulus that affects transcription, translation, calcium and energy charge in tomato. *Planta* 227, 883–891.
- Sandu, D.D., Goiceanu, C., Ispas, A., Creanga, I., Miclaus, S., Creanga, D.E., 2005. A preliminary study on ultra high frequency electromagnetic fields effect on black locust chlorophylls. *Acta Biol. Hung.* 56, 109–117.
- Santini, R., Santini, P., Danze, J.M., Le Ruz, P., Seigne, M., 2002. Study of the health of people living in the vicinity of mobile phone base stations: I. Influences of distance and sex. *Pathol. Biol.* 50, 369–373.
- Schmutz, P., Siegenthaler, J., Stäger, C., Tarjan, D., Bucher, J.B., 1996. Long-term exposure of young spruce and beech trees to 2450 MHz microwave radiation. *Sci. Total Environ.* 180, 43–48.
- Schorpp, V., 2011. Tree damage from chronic high frequency exposure. The effect of electromagnetic radiation on trees, First symposium February 18, 2011, Lecture, Baan, Netherlands (<http://www.puls-schlag.org/download/Schorpp-2011-02-18.pdf>).
- Selga, T., Selga, M., 1996. Response of *Pinus sylvestris* L. needles to electromagnetic fields. Cytological and ultrastructural aspects. *Sci. Total Environ.* 180, 65–73.
- Shahbazi-Gahruei, D., Karbalaee, M., Moradi, H.A., Baradaran-Ghahfarokhi, M., 2014. Health effects of living near mobile phone base transceiver station (BTS) antennae: a report from Isfahan, Iran. *Electromagn. Biol. Med.* 33, 206–210.
- Sharma, V.P., Singh, H.P., Kohli, R.K., Batish, D.R., 2009. Mobile phone radiation inhibits *Vigna radiata* (mung bean) root growth by inducing oxidative stress. *Sci. Total Environ.* 407, 5543–5547.
- StatSoft, Inc, 2004. STATISTICA (data analysis software system), version 7. www.statsoft.com.
- Stefi, A.L., Margaritis, L.H., Christodoulakis, N.S., 2016. The effect of the non ionizing radiation on cultivated plants of *Arabidopsis thaliana* (Col.). *Flora* 223, 114–120.

- Tkalec, M., Malarić, K., Pevalek-Kozlina, B., 2005. Influence of 400, 900, and 1900 MHz electromagnetic fields on *Lemna minor* growth and peroxidase activity. *Bioelectromagnetics* 26, 185–193.
- Tkalec, M., Malarić, K., Pavlica, M., Pevalek-Kozlina, B., Vidaković-Gifrek, Ž., 2009. Effects of radiofrequency electromagnetic fields on seed germination and root meristematic cells of *Allium cepa* L. *Mutat. Res. Genet. Toxicol. Environ. Mutagen.* 672, 76–81.
- Van't Wout, N., 2006. Unknown tree damage. <http://www.boomaantastingen.nl>.
- Vian, A., Davies, E., Gendraud, M., Bonnet, P., 2016. Plant responses to high frequency electromagnetic fields. *Biomed. Res. Int.* 2016, 1830262. <http://dx.doi.org/10.1155/2016/1830262>.
- Volkrodt, W., 1987. Wer ist am Waldsterben schuld? Mikrowellensmog der Funk- und Nachrichtensysteme. *Raum Zeit* 26, 53–62.
- Volkrodt, W., 1991. Droht den Mikrowellen ein ähnliches Fiasko wie der Atomenergie? *Wetter-Boden-Mensch* 4, 16–23.
- Waldmann-selsam, C., 2007. Mikrowellensyndrom – ein neues Krankheitsbild, Vortrag, 6. Rheinland-Pfälzisch-Hessisches Mobilfunksymposium, 14.4.2007, BUND Rheinland-Pfalz, Mainz. http://www.bund-rlp.de/publikationen/tagungsbaende/mobilfunksymposium/6_mobilfunksymposium/.
- Waldmann-Selsam, C., Eger, H., 2013. Baumschäden im Umkreis von Mobilfunksendeanlagen. *Umwelt Med. Ges.* 26, 198–208 (<http://kompetenzinitiative.net/KIT/wp-content/uploads/2016/06/Tree-damages-in-the-vicinity-of-mobile-phone-base-stations.pdf>).
- Wolf, R., Wolf, D., 2004. Increased incidence of cancer near a cell-phone transmitter station. *Int. J. Cancer* 1, 123–128.